



For ANGLE-DROP Styles

BEFORE INSTALLATION:

1. READ THESE DETAILED INSTALLATION INSTRUCTIONS.

2. Material and tool requirements: - Estimate square footage and add 10%. - Select underlayment (over concrete or in moisture prone areas, the underlayment selected must act as a vapour barrier). If the product you have selected already has a pre-attached underlayment, then a 6 mil vapour barrier must be used over concrete or in moisture prone areas.

- Wood glue, spacers, pull-bar, and circular saw with a fine-toothed blade, hammer (min. 1 lb), pencil, and straight edge.

3. Acclimation:

Store unopened boxes flat in the room where the flooring is to be installed, for a minimum of 48 hours prior to installation. Once boxes are opened, they should be installed immediately.

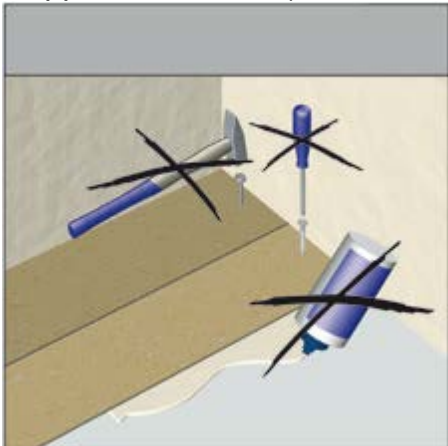
4. Please inspect the flooring panels carefully for any possible damage or defects before installation. No complaints regarding visual defects will be accepted after the flooring is installed. If you discover apparent defects in the flooring panels you should stop the installation immediately and call us at 1-800-356-5260.

5. Laminate flooring is not suitable for wet areas.

Installation Instructions:

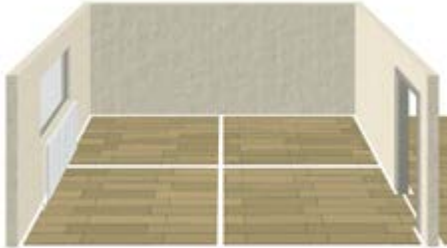
1. NEVER USE A TAPPING BLOCK OR INSTALLATION KIT DESIGNED FOR OTHER LAMINATE FLOORS. USING THESE TOOLS WILL DAMAGE YOUR FLOOR AND VOID YOUR WARRANTY.

2. This Laminate flooring is designed to be installed floating. Under no circumstances should flooring panels be glued, nailed, screwed or otherwise adhered (e.g. door stopper, closet track) to the subfloor in any way.



3. This Laminate flooring needs room to expand. An expansion gap of 10–15 mm (3/8" to 5/8") should always be left around the perimeter of the room (e.g.: between the flooring panels and the walls or any other fixed elements, such as heating pipes or door jambs). This expansion gap can be covered up with baseboards, quarter rounds or the

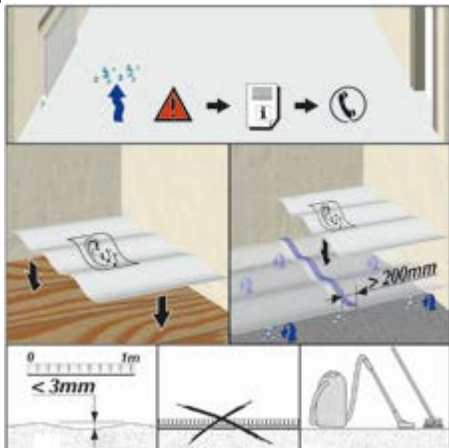
appropriate floor trim. **T-Mouldings (at least 2 cm (1") in width) must be used between adjoining rooms, hallways and doorways. T-Mouldings must be used in the middle of rooms measuring more than 10 metres (33') in the direction of the panel length and more than 8 metres (26') in the direction of the panel width.**



4. Installation should be carried out at a room temperature of at least 18°C (65°F) and a floor temperature of at least 15°C (59°F). The relative humidity in the room should be 50-60 %. The temperature difference between the flooring panels and the subfloor should not exceed ± 3 degrees.

5. The sub-floor must be absolutely level, dry, clean, and firm. Carpet is not a suitable underlayment. Differences in floor level of more than 3 mm per meter span (1/8" on 3') must either be sanded down or filled in with suitable floor filling compound.

6. For installation below grade, or on a concrete subfloor, an underlayment with vapour barrier must be used. If the product you have selected already has a pre-attached underlayment, then a 6 mil vapour barrier must be used over concrete or in moisture prone areas.



The seams of underlayment should overlap by at least 20 cm (8") and must be taped with moisture resistant tape along the length of this overlap. For more information regarding vapour emission from concrete, please call us at 1-800-359-5260.

7. For acoustic insulation, an appropriate underlayment should be used. Underlayment maximum thickness under this Flooring is 4mm and a minimum density of 53 kg/m³ (3.5 lbs/ft³). If the product you have selected already has a pre-attached underlayment, this step is not needed.

8. Flooring panels should preferably be installed longitudinally (lengthwise) to the main light source.



9. Avoid narrow pieces at the finish wall. Measure the distance between the starting wall and the finish wall. Divide this number by the width of the laminate flooring plank.

The remainder must be greater than 6.35 cm (2 ½”).

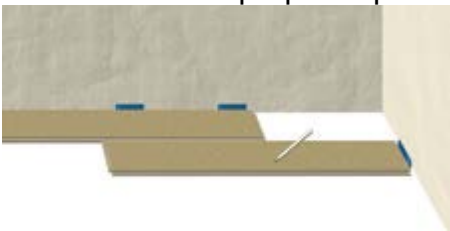
10. For installation on underfloor heating please call 1-800-359-5260 for further information. Radiant heated subfloors should never exceed 26 degrees C (79 degrees F).

11. Your Laminate flooring can be walked on immediately following installation. As soon as part of the flooring has been installed, the furniture can be moved onto the finished installation.

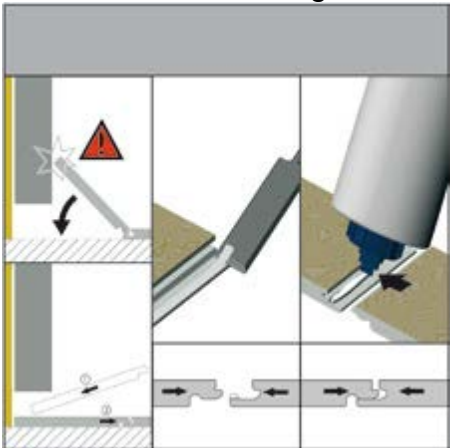
Assembling flooring panels:

1. Install appropriate underlayment as per the underlayment manufacturer’s guidelines.

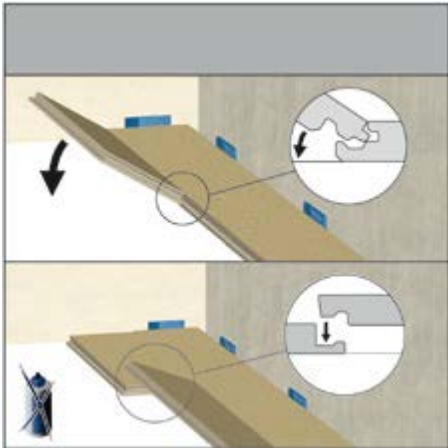
2. For the first row of panels cut off the tongue of the plank. Lay the first plank with the trimmed tongue edge on the long side of the plank facing the wall while taking special care to maintain proper expansion as explained in point #3 above.



3. Assemble the end joints by lowering the tongue of the plank into the groove from top to bottom on the short side of the panel. Glue the short sides of the panels on the first and last rows and weigh them down for approximately one hour until the glue sets.

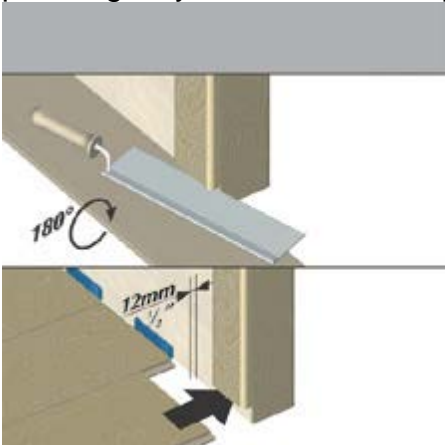


4. To start the second row, use the remainder of the last plank of the first row if it is longer than 30cm (12") long, otherwise, cut a new plank in half and proceed. To ensure structural integrity of your floor, it is mandatory to **ALWAYS STAGGER THE END JOINTS FROM ROW TO ROW BY AT LEAST 40cm (16")**.

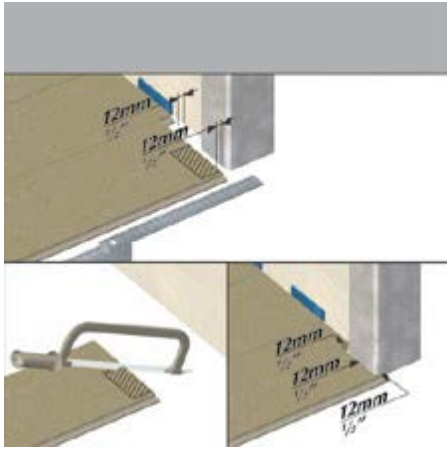


5. Angle the tongue of the long side of the plank into the groove of the first panel of the first row at an angle of approx. 25° and lower the panel to lock it into place.

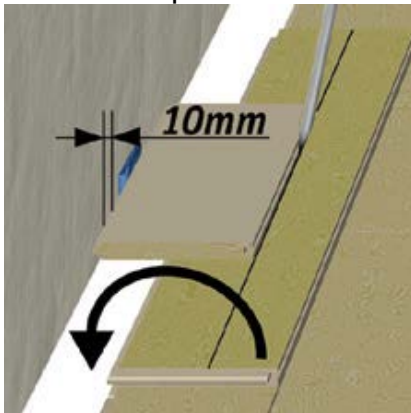
6. In the case where you are unable to angle panels (eg. Under a doorframe or radiator), you must cut away the locking edge of the lip of the bottom groove by using a wood chisel. Run a bead of glue on the now modified tongue and groove. Tighten the panels gently with the use of a pull bar and a hammer.



7. If a doorframe must be undercut, lay a plank of flooring next to the doorframe with the patterned side facing down. Undercut the doorjamb with a saw, then slide the flooring plank under the doorjamb with the decorative pattern facing upwards. Please note that the floor must be allowed to expand under the doorjamb and recommended expansion gap must be respected



8. Continue the installation in this manner until you get to the last row. For the last row, measure the exact width required. To do this, lay a plank of flooring on the second to last row. Then lay a second plank of flooring on top of this plank with the tongue side of the plank touching the wall. This will allow you to determine the width needed for the final row. Make a mark with a pencil and cut with a saw along this mark. Expansion gap must be respected!



Maintaining Your Floor:

This Laminate Flooring is among the highest performing floors available, but is not indestructible. Minor cosmetic scuffing is considered normal wear for any laminate flooring. To ensure that your floors perform well for years to come, please follow the following care and maintenance recommendations:

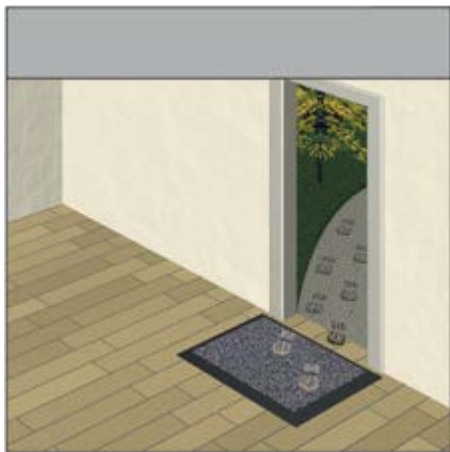


Cleaning:

- Simply clean this Laminate Flooring floor with a soft broom or a vacuum cleaner meant for hard surface flooring for day-to-day maintenance.
- Wipe off footmarks and dirty areas with a very well wrung-out moist cloth. Do not use wet cloths.
- Do not attempt to clean this Laminate Flooring floor with wax, oil soap, polish, or scouring materials. Stubborn stains can be removed with commercially available laminate flooring cleaner. Use of wet jets mops and floor steamer type products is not recommended. Use a DAMP mop and avoid excess of water during cleaning.

Care:

- Place walk off mats and area rugs in main traffic areas and entrances.
- Fit felt pads under your furniture. For rolling office chairs, the use of soft castors (type W according to EN12529) is mandatory.



Manufacturer's Limited Warranty:

The manufacturer offers a limited warranty against manufacturing defects from date of purchase on this product. The manufacturer guarantees that:

- The decorative laminate surface will not wear through.
- The surface of the plank will resist staining.
- The surface of the plank will not fade or discolour, due to natural or artificial lightning.

For questions regarding our products please call toll-free: 1-800-359-5260